



WILTSHIRE

Ideal for **product launches, automotive events, team building, away days, corporate festivals, award ceremonies, summer and Christmas parties.**

syrencot.co.uk

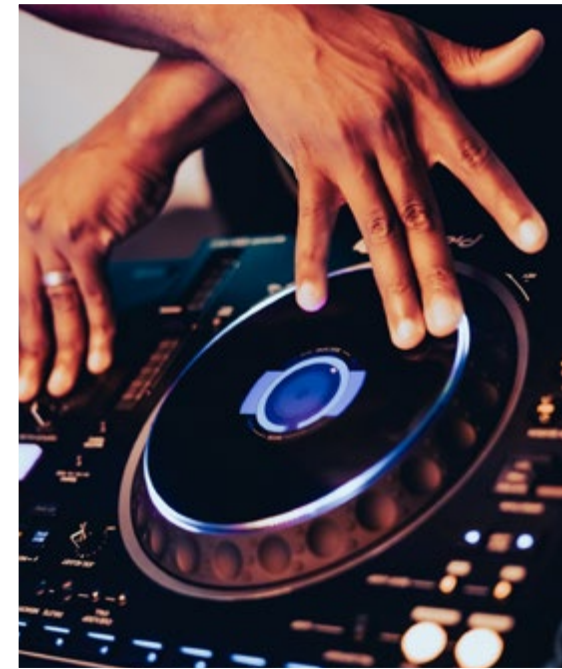
eventenquiries@syrencot.co.uk

01980 669210

EXCLUSIVE USE EVENT VENUES

Syrencot – creating unforgettable events

Whether you're planning a live event such as a **conference**, **product launch**, or **awards evening**, a team-building or away day, or a showstopping **seasonal party**, we have a venue for you. Our friendly and professional team is dedicated to delivering the very best experiences that engage, inspire, and motivate your audience.



Perfect for large gatherings

WILTSHIRE – SP4 8LB

This Grade II-listed Georgian manor house and contemporary barn venue, first built in 1738 and restored in 2018, sprawls over five acres of breathtaking grounds and gardens. Just 60 minutes away from Bath city centre, this exclusive-use events venue is a secluded setting for a private experience that feels like a retreat from the world. There are also 13 onsite bedrooms, including a luxurious Master Suite.

SPACE

- Host up to 200 delegates
- 13 ensuite bedrooms
- Flexible meeting spaces
- Walled gardens and parkland
- Onsite parking
- Disabled access
- Ability to display a vehicle inside

FOOD AND DRINK

- In-house caterers
- Variety of bespoke dining experiences
- Outdoor kitchen
- Onsite bar

LOCATION

- 5 minutes from A303
- 25 minutes from Salisbury train station
- 25 minutes from Salisbury town centre
- 55 minutes from Southampton
- 100 minutes from London



The Glasshouse – ideal space for networking

THEATRE

150

U SHAPE

40

CABARET

80

BOARD ROOM

40

DINNER

150

The Farmshed – ideal space for product launches

THEATRE

150

U SHAPE

40

CABARET

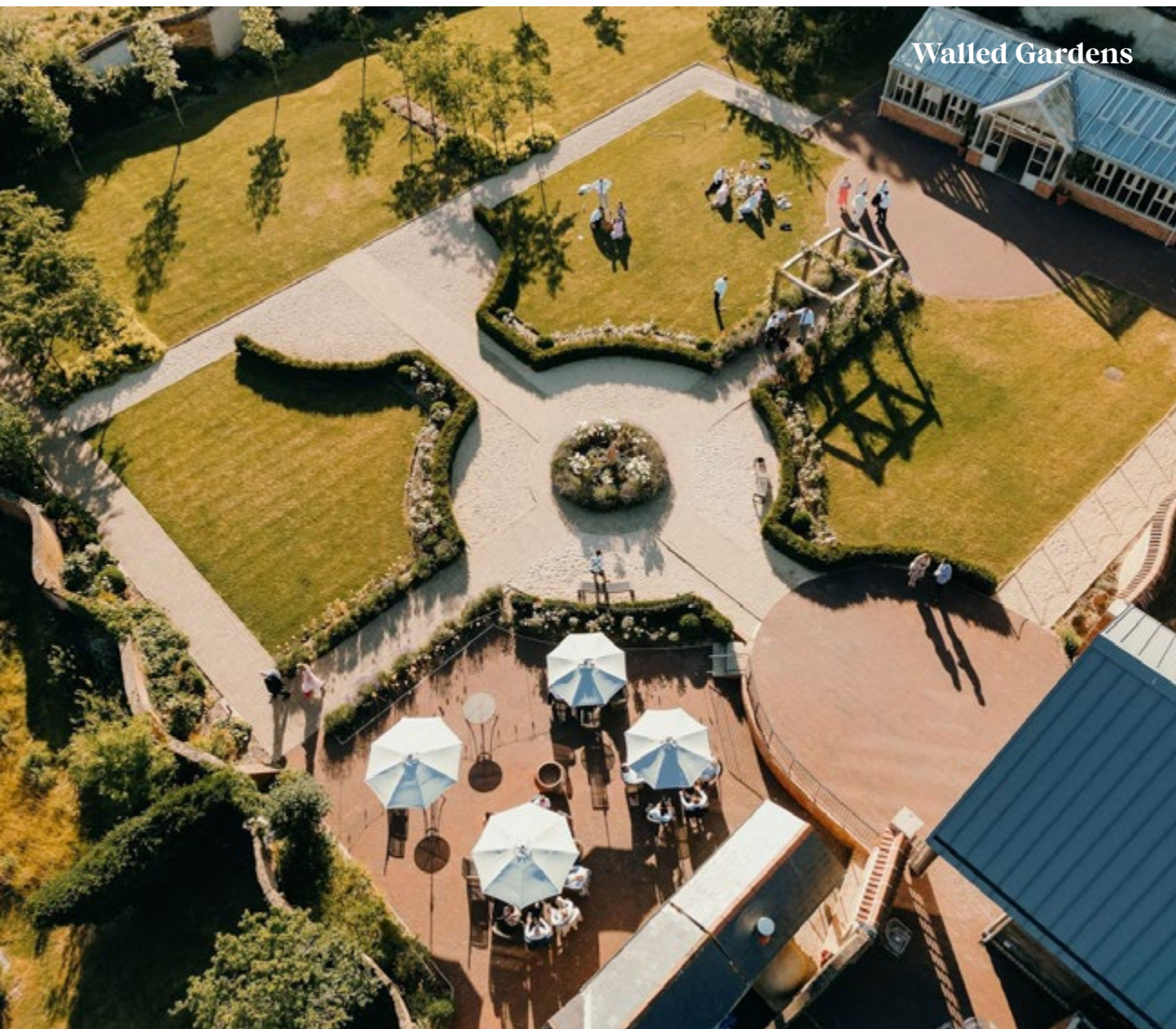
80

BOARD ROOM

40

DINNER

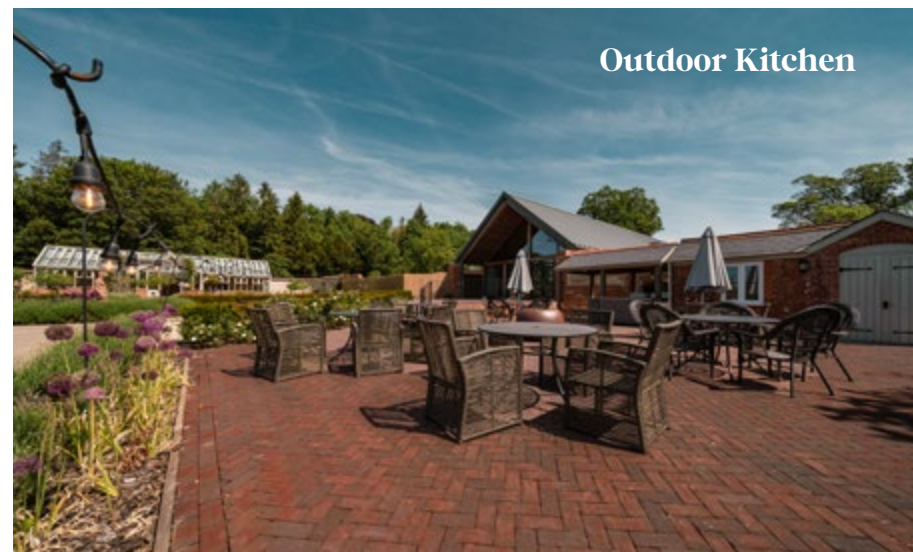
150



Walled Gardens



The Farmshed



Outdoor Kitchen

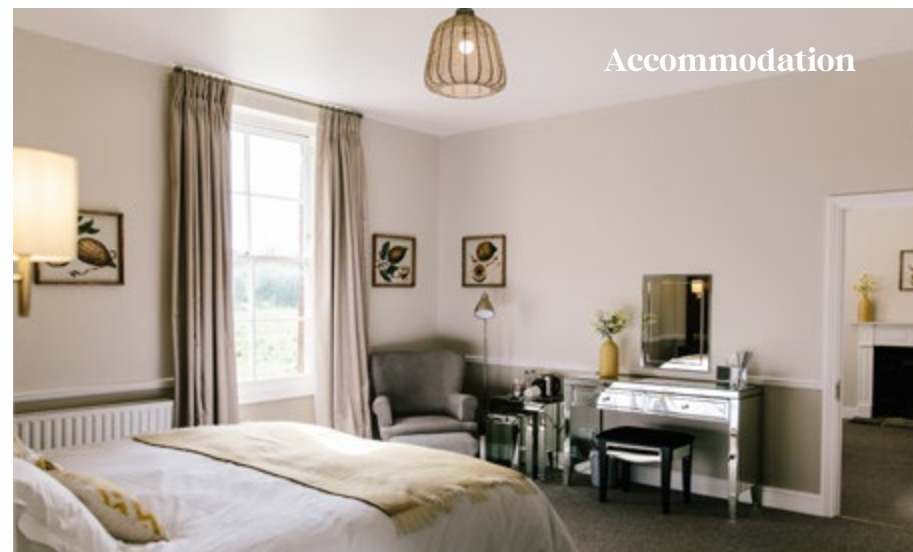
Syrencot House - sleeps up to 29



The Mess - small breakout space



Accommodation



Room specifications



THEATRE



U SHAPE



CABARET



BOARD ROOM



DINNER

	THEATRE	U SHAPE	CABARET	BOARD ROOM	DINNER
The Glasshouse	150	40	80	40	150
The Farmshed	150	40	80	40	150

Certain set ups and guest numbers may require hire of additional furniture.

	WIDTH	LENGTH	HEIGHT (Highest)	HEIGHT (Lowest)	ACCESSIBLE ROOM
The Glasshouse	7.5m	15.3m	2.3m	2.3m	Yes
The Farmshed	10m	29m	2.25m	2.25m	Yes

AV EQUIPMENT

We have a microphone and speakers, as well as a flipchart, paper and pens available for you onsite. Upon request, we can hire additional equipment including projectors and screens.

Our venues

Syrencot is a part of **The Artemis Collection**, a premium group of exclusive venues in the UK, providing unparalleled access to real-time availability, pricing, and comprehensive venue information - all in one place. We are your single point of contact for the newest and most exciting event venues across the UK.



1.

Brookfield Barn
WEST SUSSEX



2.

Combermere Abbey
CHESHIRE / SHROPSHIRE



3.

Crumplebury
WORCESTER



4.

Curradine Barns
WORCESTER



5.

Old Palace Chester
CHESHIRE



6.

Pelham House
EAST SUSSEX



7.

Syrencot
WILTSHIRE



8.

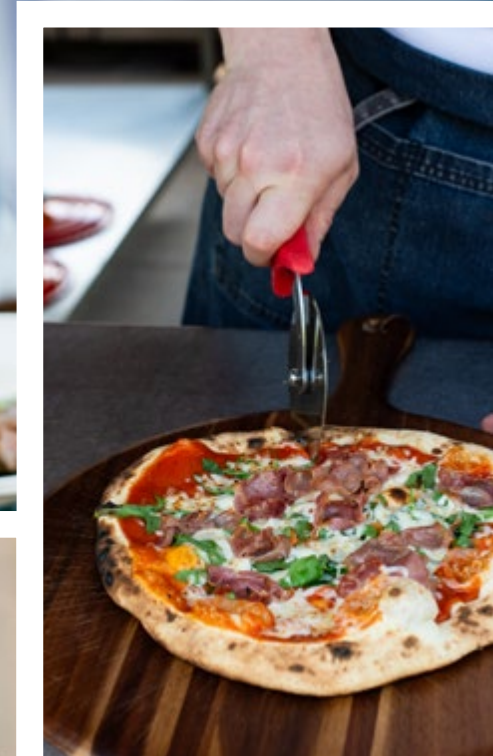
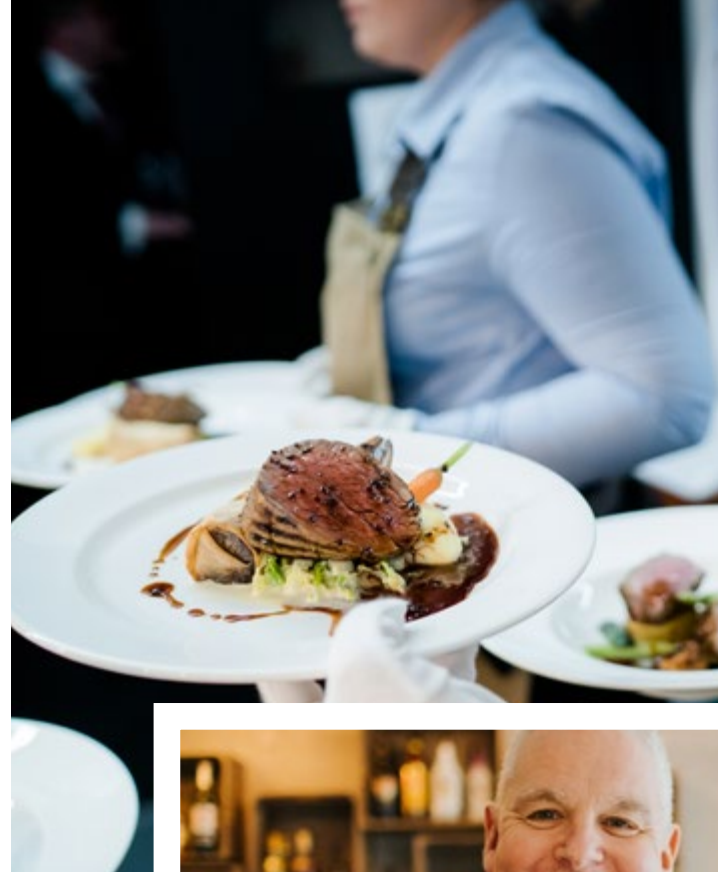
The Pear Tree
WILTSHIRE

Tailored to you

Choosing the right venue is crucial when you are planning an event. Over 25 years of experience in catering and event management means we can deliver on the most exciting and dynamic requests, from awards evenings to corporate festivals and product launches.

Each of our venues employ its own in-house chef and bar team, all highly skilled professionals, who thrive when creating bespoke menus and working with clients to deliver incredible food and drink experiences.

[SAMPLE MENU](#)



Proud to partner with



“The Queens Park Bridge centenary celebration at Old Palace Chester was a fantastic opportunity to bring the local community of Chester together.”

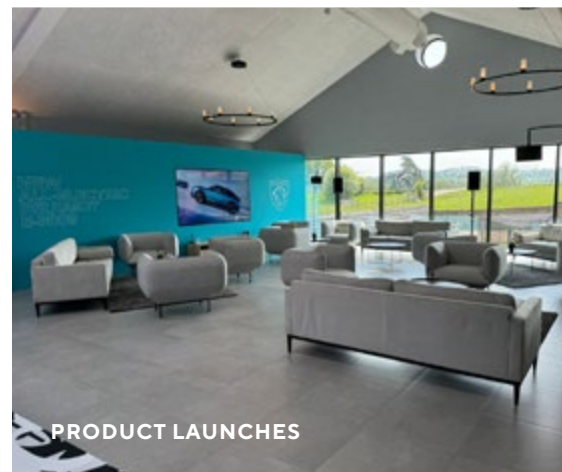
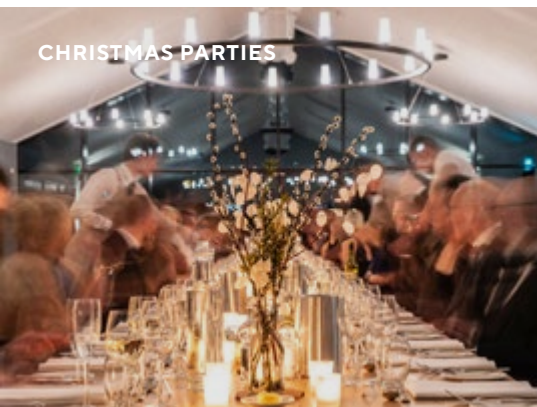
CHESTER BUSINESS CLUB

“An ideal location for our event! A delightful setting nestled in the rolling countryside. The food and the staff exceeded all expectations.”

VOLVO



EVENT TYPES



Suitable for all types of events

Our Artemis Collection of venues are suitable for a range of events, including corporate away days, team-building events, business meetings, conferences, workshops, gala dinners, charity events, award ceremonies, networking events, Christmas parties, summer parties, product launches, corporate festivals, automotive events ... and many more.

Let's get your event started...

Contact the Syrencot team now

eventenquiries@syrencot.co.uk 01980 669210



Syrencot – a part of The **Artemis** Collection

BROOKFIELD
— BARN —



Crumplebury
For the curious



Images courtesy of Maddie Waters Photography, You and Yours Photography, Honeydew Moments, Ben Goode, Katherine Yiannaki Photography, Mark Nicholson, Jaine Briscoe-Price Photography, Studio Rouge, Hayley Rose Photography, Olive Joy Photography, Kit Myers, Liam + Bee, Michael White Photography, Myles Films, Ace T Photography, Stu Jotham Photography, Binky Nixon Photography, Rachel Jane Photography, Atlas Photography and Lydia Stamps Photography.